



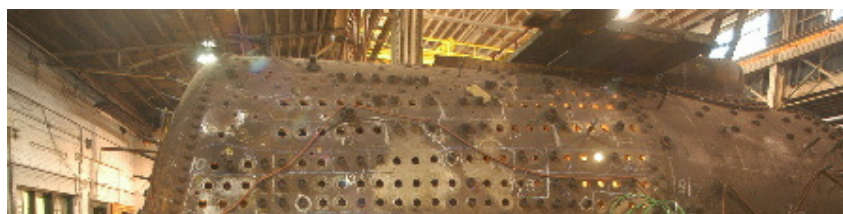
Work on 3713 Continues

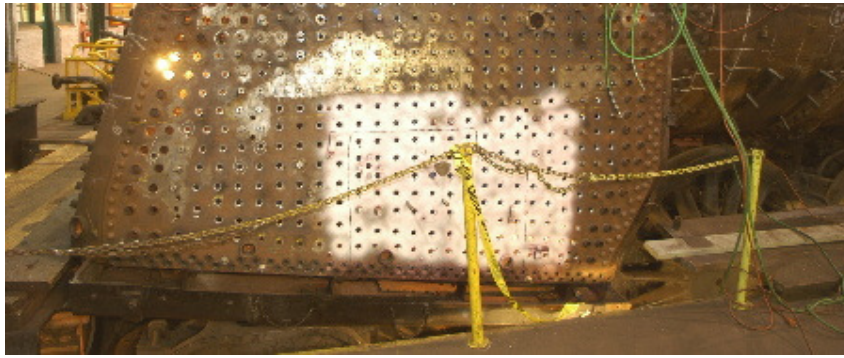
LACKAWANNA AND WYOMING VALLEY CHAPTER NRHS

Work on 3713 Continues



Bruce Mowbray cutting shims for 3713.





Firebox Side Sheet to be replaced



Bruce Mowbray cutting shims for 3713.

In the first few months of 2004 work on the 3713 has continued. While parts are being disassembled, some new parts are being fabricated and are prepared for installation. More information is coming on this. Photos courtesy of Ken Ganz.

[Go to 3713 Project](#)

L&WV



CROWN AVENUE TUNNEL

